

LOT  
**11**

By Order of the Executors

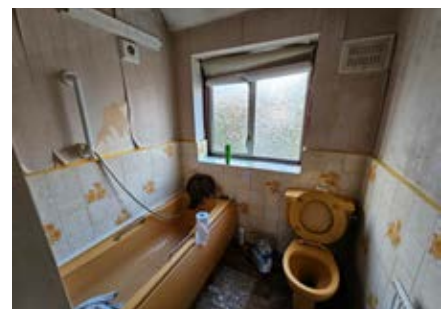
28 Harley Road, Harrow, Middlesex HA1 4XG

**Guide Price £350,000\***

**THREE BEDROOM MID TERRACED HOUSE IN NEED OF UPDATING AND MODERNISATION THROUGHOUT**



The property is situated in a popular tree lined road off Harrow View within a mile of Harrow Town centre. The town offers underground services on the Metropolitan Line, major shopping facilities and a bus terminal. Further overground services are available at nearby Harrow and Wealdstone. Good road links are easily accessible including the A40 Western Avenue that connects to Central London, the M40 and the M25 London Orbital Motorway. The M4 and Heathrow London Airport are also easily accessible. The area is well served by local schools and open spaces. The property is a centre terraced three bedroom bay fronted house with through reception room and a lean-to addition. The house does benefit from gas fired central heating and double glazing although it is in need of complete updating and modernisation throughout. There are front and rear gardens which are overgrown. There is potential for off street parking and further extension to the dwelling subject to obtaining any necessary consent that may be required. This house is sold with vacant possession and will be of interest to investment buyers and owner occupiers.



**ACCOMMODATION**

Entrance Hall, Kitchen, Through Living Room, Conservatory, First Floor Landing, Bedroom One, Bedroom Two, Bedroom Three, Bathroom, Gardens.

**TENURE**

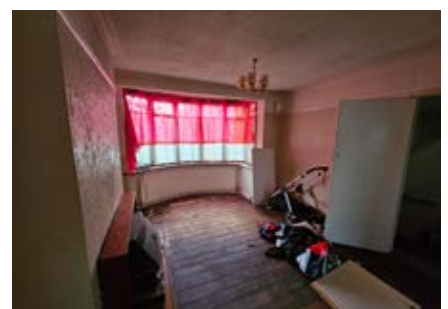
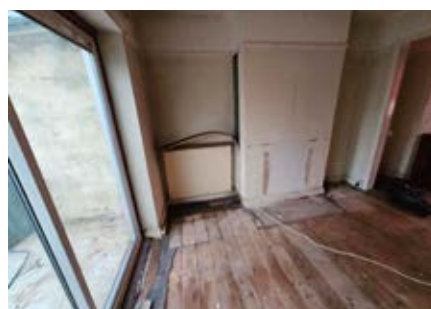
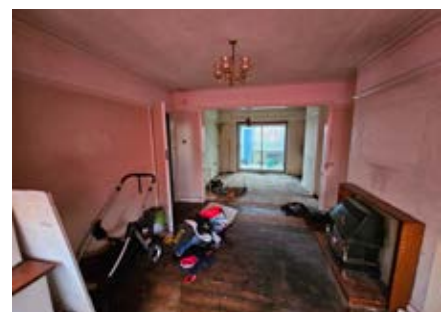
Freehold

**LOCAL AUTHORITY & TAX RATING**

London Borough of Harrow  
Council Tax Band D  
EPC pending

**VIEWING TIMES**

Wednesday 31st January @ 1 - 1.30pm  
Saturday 3rd February @ 12 - 12.30pm  
Wednesday 7th February @ 1 - 1.30pm



STARTING BID

FINAL BID

NOTES

SOLD  UNSOLD  SOLD PRIOR  WITHDRAWN