

# Lot 9

## Land adjacent to 66 The Paddocks, Broadbridge Heath, RH12 3NE



**GUIDE PRICE: £75,000**

**DEVELOPMENT SITE WITH PLANNING FOR SPACIOUS DWELLING**

This predominately rectangular development site occupies a site area of approximately 374 sq m (0.0924 acres) and has been granted planning permission by the local authority under reference no DC/07/2553 for the erection of a four bedroom detached house with parking. The site is located within Broadbridge Heath Village less than a quarter of a mile from local shopping facilities and within easy access of Horsham Town Centre with its mainline station. The site is being sold with the benefit of vacant possession and full details of planning and drawings are available for inspection at the offices of the Auctioneers.

### **LOCAL AUTHORITY**

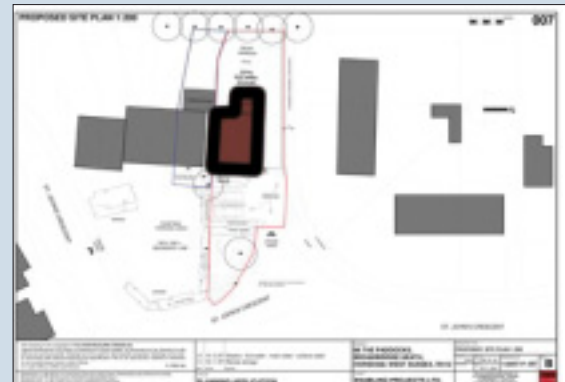
Horsham District Council: 01403 215100

### **VENDORS SOLICITORS**

Refer to Auctioneers

### **VIEWING TIMES**

By appointment through the Auctioneers



Not to scale. For identification purposes only

Crown copyright. Reproduced from Ordnance Survey Mapping with permission from HMSO

STARTING BID

FINAL BID

NOTES

SOLD  UNSOLD  SOLD PRIOR  WITHDRAWN